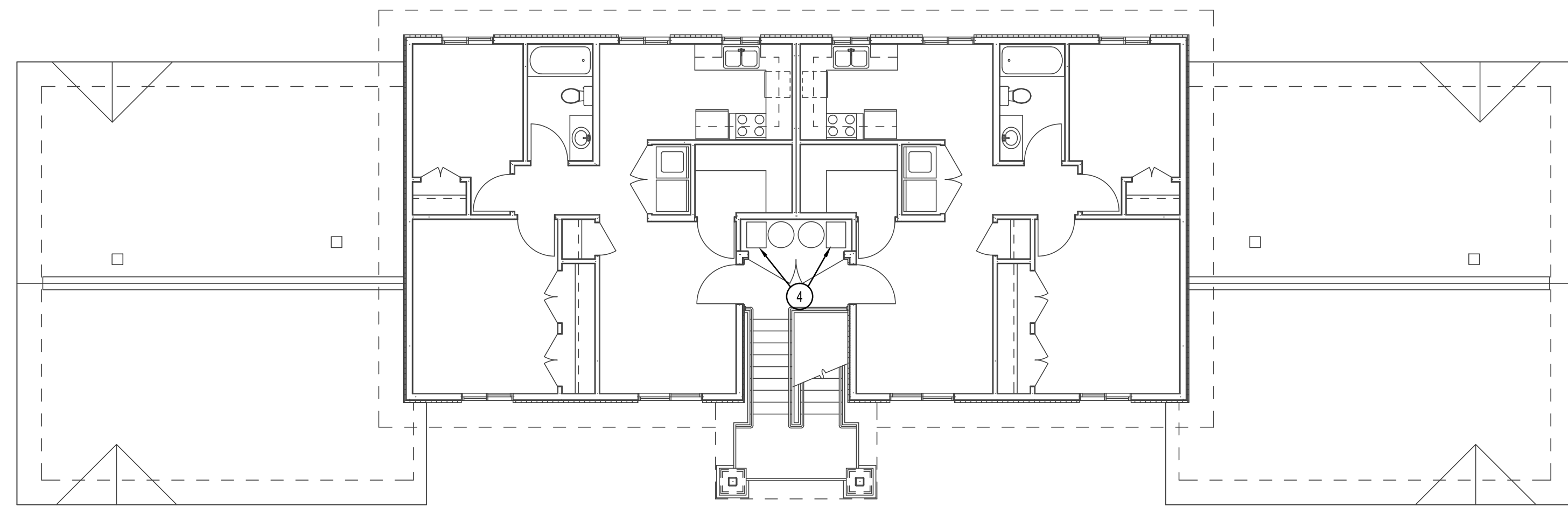
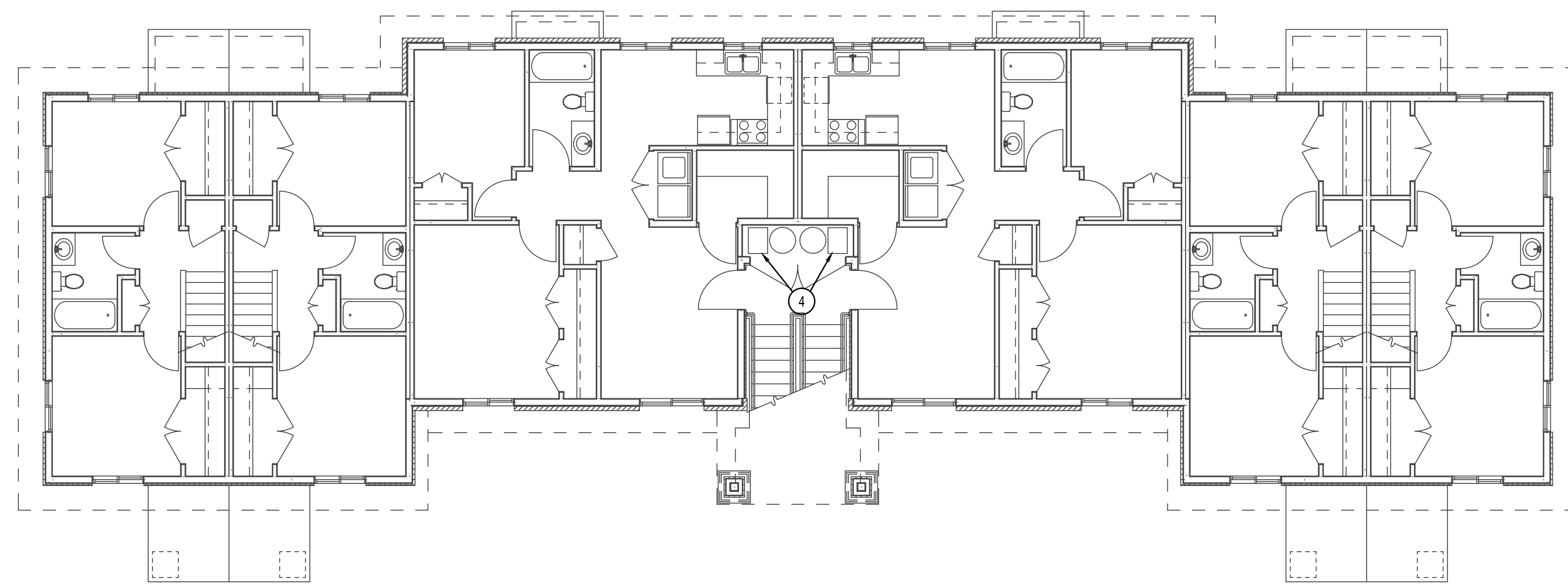
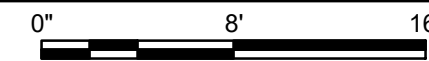


I:\PESERVER\Payne Engineering Data\2018\BYU Village Apartments - 189710_ Working Drawings\1894E1.dwg Jan 07, 2019 - 12:08pm



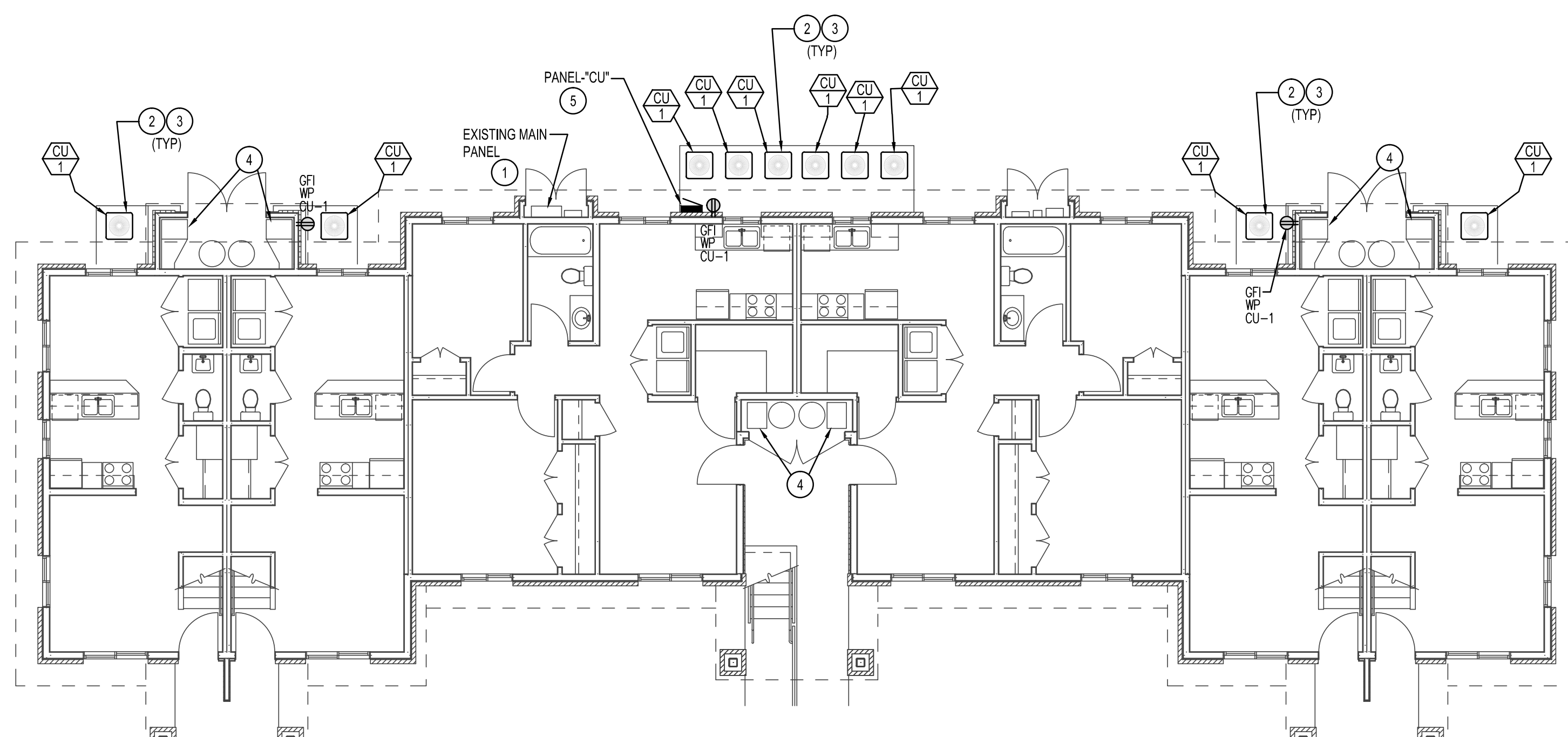
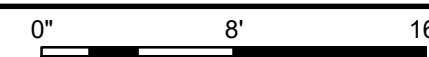
3RD LEVEL BUILDING #5 - POWER

SCALE: 1/8" = 1' - 0"



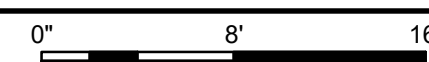
2ND LEVEL BUILDING #5 - POWER

SCALE: 1/8" = 1' - 0"



MAIN LEVEL BUILDING #5 - POWER

SCALE: 1/8" = 1' - 0"



KEY NOTES

- 1 INSTALL A 2" x 3-1/2" x 1/2" GROUND TO NEW PANEL-CU. CONNECT TO SPARE LUG ON LOAD SIDE OF MAIN BREAKER. FEEDER LENGTH SHALL NOT EXCEED 25FT. POSITION PANEL-CU ACCORDINGLY.
- 2 PROVIDE AND INSTALL 3/4" x 2-1/2" x 1/2" GROUND FROM 30A 2P BREAKER TO EACH COND. UNIT. PROVIDE A LOCAL DISCONNECT FOR EACH UNIT NOT IN LINE OF SIGHT TO PANEL-CU.
- 3 PROVIDE AND INSTALL A 1/2" CONDUIT FROM COND. UNIT TO RESPECTIVE FURNACE FOR CONTROLS. FOLLOW REFRIGERATION PIPING.
- 4 CAREFULLY DISCONNECT EXISTING FURNACE FOR REMOVAL. PROTECT, MAINTAIN AND/OR REESTABLISH SERVICE DISCONNECT AND CIRCUIT TO NEW FURNACE. MAKE ALL REQUIRED CONNECTIONS.
- 5 PANEL-CU FEEDER ROUTING SHALL BE ROUTED UNDERGROUND FROM MAIN BREAKER. ALL EXPOSED CONDUIT SHALL BE RGC TAPED AND WRAPPED WHERE IN CONTACT WITH EARTH OR CONCRETE.



Engineered Systems Associates
Mechanical Engineers

Dwayne Suckweeks
1355 East Center - Pocatello, Idaho 83201
Phone: (208) 233-0501 Fax: (208) 233-0529 email: esa@engsystems.com

AIR CONDITIONING FOR:
BYU-IDAHO VILLAGE APARTMENTS
REXBURG, IDAHO

PROJECT

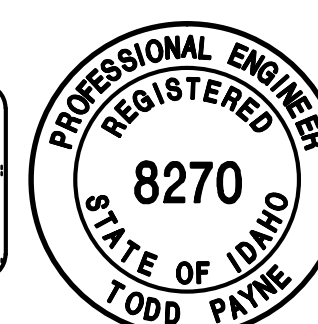
BLDG. #5 ELECTRICAL PLANS

SHEET TITLE

DRWN. BY:	OXD. BY:
MP	TP
JOB NO.	DATE:
18069	DEC. 2018

SHEET: **E1.2**
OF:

ORIGINAL SIGNED BY:
TODD E. PAYNE
DATED ORIGINAL SIGNED:
1-7-2019
DN FILE AT:
PAYNE ENGINEERING INC.



P.E. JOB #1894

IPAYNE
Engineering Inc. Consulting Engineers

1623 E. Center
Pocatello, Idaho 83201
tel (208) 232-4439
www.payneengineeringinc.com